



**PHOENIX**  
TECHNOLOGY SERVICES

# **BLACKSPUR OIL CORP.\_N83**

**Leduc-WB (NAD 83-Z11)**

**14-03-051-02W5**

**BLACKSPUR HZ LEDUC-WB 16-11-51-2**

**100/16-11-051-02W5/00**

**Plan: 28333 P5**

## **Standard Planning Report (Field)**

**22 January, 2022**

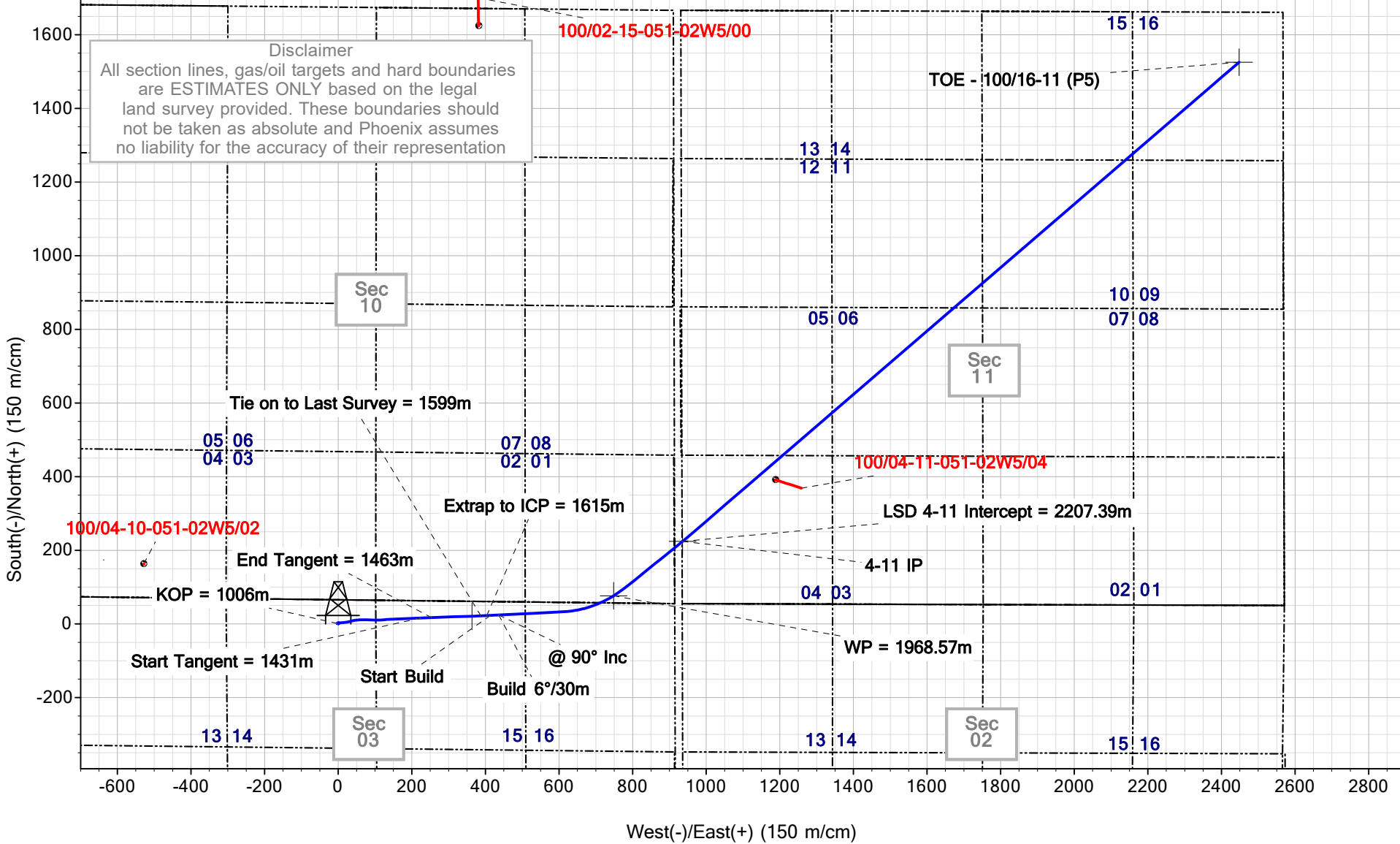
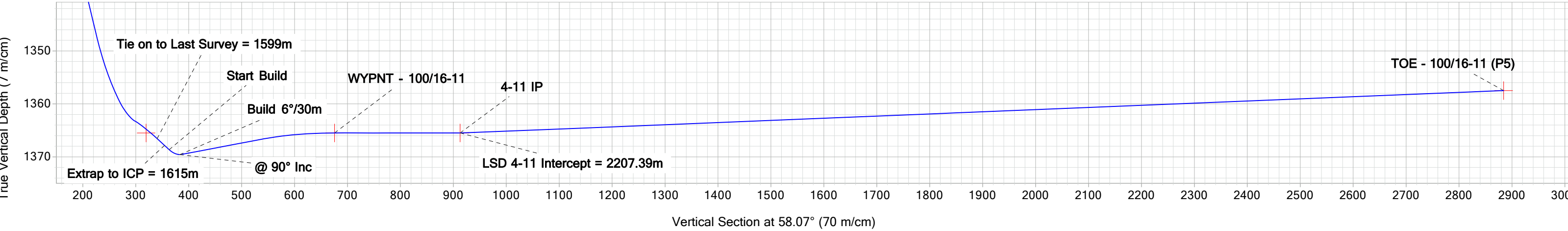
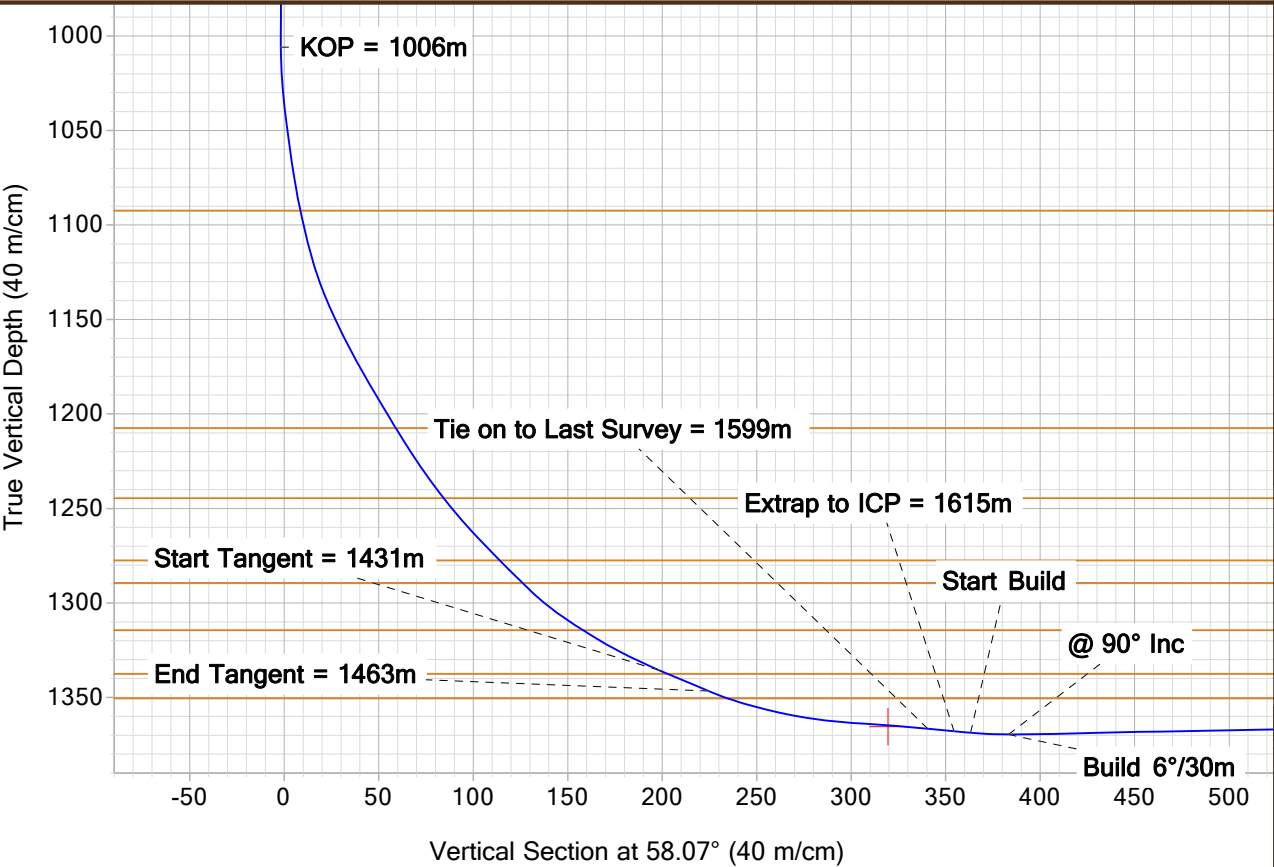
BLACKSPUR OIL CORP. N83

Project: Leduc-WB (NAD 83-Z11)  
Site: 14-03-051-02W5  
Well: BLACKSPUR HZ LEDUC-WB 16-11-51-2  
Wellbore: 100/16-11-051-02W5/00  
Design: 28333 P5  
Well License #:



Ground Level (m): 742.01  
Actual KB @ 747.51m (Horizon 43

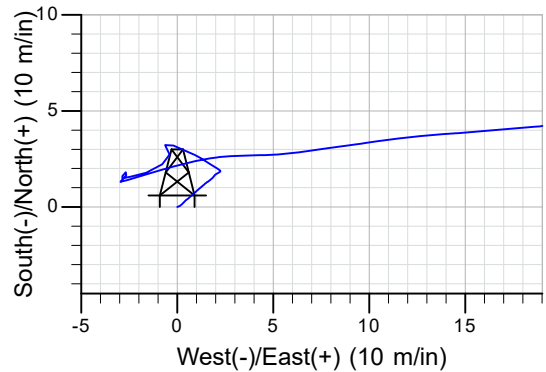
SECTION DETAILS									
MD	Inc	Azi	TVD	+N/-S	+E/-W	Dleg	TFace	VSect	Annotation
1599.00	85.40	87.20	1366.59	21.93	387.53	0.000	0.00	340.50	Tie on to Last Survey = 1599m
1615.00	85.40	87.20	1367.87	22.70	403.46	0.000	0.00	354.43	Extrap to ICP = 1615m
1625.00	85.40	87.20	1368.67	23.19	413.42	0.000	0.00	363.14	Start Build
1648.00	90.00	87.20	1369.60	24.31	436.37	6.000	0.00	383.21	@ 90° Inc
1652.75	90.95	87.20	1369.56	24.55	441.11	6.000	-0.11	387.36	
1821.51	90.95	87.20	1366.76	32.79	609.65	0.000	0.00	534.76	
1968.57	90.00	57.80	1365.51	76.54	748.36	6.000	-91.69	675.62	WP = 1968.57m
2018.73	90.00	51.11	1365.51	105.68	789.15	4.000	-90.00	725.65	
2207.39	90.00	51.11	1365.51	224.12	936.00	0.000	0.00	912.92	LSD 4-11 Intercept = 2207.39m
2221.27	90.23	49.28	1365.48	233.00	946.66	4.000	-82.84	926.67	
4202.21	90.23	49.28	1357.51	1525.37	2447.93	0.000	0.00	2884.29	TD = 4202.21m



SURFACE LOCATION				
Datum: North American Datum 1983				
Zone: Zone 11N (120 W to 114 W)				
Northing: 5918259.20				
Easting: 685392.50				
Latitude: 53° 22' 51.065 N				
Longitude: 114° 12' 45.341 W				
DESIGN TARGET DETAILS				
Name	+N/-S	+E/-W	Northing	Easting
TOE - 100/16-11 (P5)	1525.37	2447.93	5919879.00	687779.00
4-11 IP	224.12	936.00	5918519.70	686319.03
HEEL - 100/16-11	20.93	363.39	5918294.30	685754.80

LOCAL COORDINATES	
Surface Co-ordinates	
65m S of N Boundary	
711.4m E of W Boundary, Sec 3	
TD Co-ordinates	
135m S of N Boundary	
120.0m W of E Boundary, Sec 11	

The graph displays a blue line representing a coordinate transformation or survey adjustment. The vertical axis is labeled "South(-)/North(+)" with a scale of 10 m/in, ranging from -5 to 10. The horizontal axis is labeled "West(-)/East(+)" with a scale of 10 m/in, ranging from -5 to 15. A small diagram of a bridge pier is centered at the origin (0,0). The blue line starts at approximately (-2, 1.5), curves slightly upwards to the right, passing through (0, 2.5), and continues to approximately (18, 4.0).



<b>Database:</b>	Compass 5000 Canada	<b>Local Co-ordinate Reference:</b>	Well BLACKSPUR HZ LEDUC-WB 16-11-51-2
<b>Company:</b>	BLACKSPUR OIL CORP._N83	<b>TVD Reference:</b>	Actual KB @ 747.51m (Horizon 43)
<b>Project:</b>	Leduc-WB (NAD 83-Z11)	<b>MD Reference:</b>	Actual KB @ 747.51m (Horizon 43)
<b>Site:</b>	14-03-051-02W5	<b>North Reference:</b>	True
<b>Well:</b>	BLACKSPUR HZ LEDUC-WB 16-11-51-2	<b>Survey Calculation Method:</b>	Minimum Curvature
<b>Wellbore:</b>	100/16-11-051-02W5/00		
<b>Job Number</b>	28333 P5		

<b>Project</b>	Leduc-WB (NAD 83-Z11)		
<b>Map System:</b>	Universal Transverse Mercator	<b>System Datum:</b>	Mean Sea Level
<b>Geo Datum:</b>	North American Datum 1983		
<b>Map Zone:</b>	Zone 11N (120 W to 114 W)		

<b>Site</b>	14-03-051-02W5		
<b>Site Position:</b>		<b>Northing:</b>	5,918,259.20 m
<b>From:</b>	Map	<b>Easting:</b>	685,392.50 m
<b>Position Uncertainty:</b>	0.00 m	<b>Slot Radius:</b>	335.28 mm
		<b>Latitude:</b>	53° 22' 51.065 N
		<b>Longitude:</b>	114° 12' 45.341 W
		<b>Grid Convergence:</b>	2.24 °

<b>Well</b>	BLACKSPUR HZ LEDUC-WB 16-11-51-2		
<b>Well Position</b>	<b>+N/-S</b>	0.00 m	<b>Northing:</b> 5,918,259.20 m
	<b>+E/-W</b>	0.00 m	<b>Easting:</b> 685,392.50 m
<b>Position Uncertainty</b>	0.00 m	<b>Wellhead Elevation:</b>	<b>Latitude:</b> 53° 22' 51.065 N
			<b>Longitude:</b> 114° 12' 45.341 W
			<b>Ground Level:</b> 742.01 m

<b>Wellbore</b>	100/16-11-051-02W5/00				
<b>Magnetics</b>	<b>Model Name</b>	<b>Sample Date</b>	<b>Declination (°)</b>	<b>Dip Angle (°)</b>	<b>Field Strength (nT)</b>
	MVHD	1/15/2022	13.68	74.72	56,340.70214604

<b>Job Number</b>	28333 P5			
<b>Audit Notes:</b>				
<b>Version:</b>	<b>Phase:</b>	PLAN	<b>Tie On Depth:</b>	1,599.00
<b>Vertical Section:</b>	<b>Depth From (TVD) (m)</b>	<b>+N/-S (m)</b>	<b>+E/-W (m)</b>	<b>Direction (°)</b>
	1,357.51	0.00	0.00	58.07

<b>Plan Sections</b>										
Measured Depth (m)	Inclination (°)	Azimuth (°)	Vertical Depth (m)	+N/-S (m)	+E/-W (m)	Dogleg Rate (°/30m)	Build Rate (°/30m)	Turn Rate (°/30m)	TFO (°)	Target
1,599.00	85.40	87.20	1,366.59	21.93	387.53	0.000	0.000	0.000	0.00	
1,615.00	85.40	87.20	1,367.87	22.70	403.46	0.000	0.000	0.000	0.00	
1,625.00	85.40	87.20	1,368.67	23.19	413.42	0.000	0.000	0.000	0.00	
1,648.00	90.00	87.20	1,369.60	24.31	436.37	6.000	6.000	0.000	0.00	
1,652.75	90.95	87.20	1,369.56	24.55	441.11	6.000	6.000	-0.012	-0.11	
1,821.51	90.95	87.20	1,366.76	32.79	609.65	0.000	0.000	0.000	0.00	
1,968.57	90.00	57.80	1,365.51	76.54	748.36	6.000	-0.194	-5.997	-91.69	WYPNT - 100/16-11
2,018.73	90.00	51.11	1,365.51	105.68	789.15	4.000	0.000	-4.000	-90.00	
2,207.39	90.00	51.11	1,365.51	224.12	936.00	0.000	0.000	0.000	0.00	4-11 IP
2,221.27	90.23	49.28	1,365.48	233.00	946.66	4.000	0.498	-3.969	-82.84	
4,202.21	90.23	49.28	1,357.51	1,525.37	2,447.93	0.000	0.000	0.000	0.00	TOE - 100/16-11 (P5)

<b>Database:</b>	Compass 5000 Canada	<b>Local Co-ordinate Reference:</b>	Well BLACKSPUR HZ LEDUC-WB 16-11-51-2
<b>Company:</b>	BLACKSPUR OIL CORP._N83	<b>TVD Reference:</b>	Actual KB @ 747.51m (Horizon 43)
<b>Project:</b>	Leduc-WB (NAD 83-Z11)	<b>MD Reference:</b>	Actual KB @ 747.51m (Horizon 43)
<b>Site:</b>	14-03-051-02W5	<b>North Reference:</b>	True
<b>Well:</b>	BLACKSPUR HZ LEDUC-WB 16-11-51-2	<b>Survey Calculation Method:</b>	Minimum Curvature
<b>Wellbore:</b>	100/16-11-051-02W5/00		
<b>Job Number</b>	28333 P5		

Planned Survey										
Measured Depth (m)	Inclination (°)	Azimuth (°)	Vertical Depth (m)	Subsea Depth (m)	+N/-S (m)	+E/-W (m)	Vertical Section (m)	Dogleg Rate (°/30m)	Build Rate (°/30m)	Turn Rate (°/30m)
0.00	0.00	0.00	0.00	747.51	0.00	0.00	0.00	0.000	0.000	0.000
30.00	0.32	72.60	30.00	717.51	0.02	0.06	0.07	0.318	0.318	0.000
60.00	1.01	43.30	60.00	687.51	0.22	0.32	0.39	0.752	0.695	-29.300
90.00	1.39	48.90	89.99	657.52	0.62	0.79	1.00	0.395	0.378	5.600
120.00	1.61	50.20	119.98	627.53	1.18	1.42	1.83	0.226	0.224	1.299
150.00	0.91	39.54	149.97	597.54	1.55	1.88	2.41	0.743	-0.708	-10.662
180.00	0.56	51.67	179.97	567.54	1.81	2.22	2.84	0.378	-0.347	12.135
210.00	0.78	294.90	209.97	537.54	2.00	2.10	2.84	1.151	0.224	-116.767
240.00	1.24	302.81	239.96	507.55	2.30	1.60	2.58	0.480	0.461	7.910
270.00	1.20	298.16	269.96	477.55	2.63	1.06	2.29	0.109	-0.045	-4.650
300.00	1.12	293.31	299.95	447.56	2.89	0.50	1.95	0.127	-0.081	-4.850
330.00	0.91	293.36	329.95	417.56	3.10	0.01	1.65	0.210	-0.210	0.050
360.00	0.60	286.12	359.94	387.57	3.25	-0.36	1.41	0.317	-0.303	-7.249
390.00	0.30	242.19	389.94	357.57	3.26	-0.59	1.23	0.441	-0.304	-43.924
420.00	0.20	180.87	419.94	327.57	3.14	-0.65	1.11	0.270	-0.098	-61.324
450.00	0.24	112.96	449.94	297.57	3.07	-0.59	1.12	0.251	0.040	-67.908
480.00	0.32	143.07	479.94	267.57	3.00	-0.46	1.19	0.165	0.078	30.106
510.00	0.54	174.95	509.94	237.57	2.79	-0.40	1.13	0.318	0.220	31.880
540.00	0.62	210.91	539.94	207.57	2.49	-0.46	0.93	0.366	0.077	35.962
570.00	0.86	239.18	569.94	177.57	2.24	-0.74	0.56	0.434	0.246	28.277
600.00	0.95	242.29	599.93	147.58	2.01	-1.16	0.08	0.096	0.082	3.109
630.00	1.00	243.40	629.93	117.58	1.77	-1.61	-0.43	0.056	0.053	1.104
660.00	0.81	256.68	659.92	87.59	1.61	-2.05	-0.89	0.280	-0.187	13.283
690.00	0.67	272.98	689.92	57.59	1.58	-2.44	-1.24	0.252	-0.139	16.294
720.00	0.42	254.74	719.92	27.59	1.56	-2.72	-1.49	0.303	-0.251	-18.237
750.00	0.22	224.41	749.92	-2.41	1.47	-2.87	-1.66	0.257	-0.201	-30.325
780.00	0.21	11.69	779.92	-32.41	1.48	-2.90	-1.68	0.415	-0.011	147.272
810.00	0.43	25.60	809.92	-62.41	1.67	-2.83	-1.52	0.228	0.216	13.916
840.00	0.22	60.43	839.92	-92.41	1.80	-2.73	-1.37	0.278	-0.210	34.827
870.00	0.15	130.92	869.92	-122.41	1.79	-2.64	-1.29	0.219	-0.063	70.486
900.00	0.21	200.25	899.92	-152.41	1.71	-2.63	-1.33	0.213	0.058	69.330
930.00	0.32	218.07	929.92	-182.41	1.58	-2.71	-1.46	0.139	0.113	17.825
960.00	0.38	224.29	959.92	-212.41	1.45	-2.83	-1.64	0.065	0.053	6.218
990.00	0.10	169.83	989.92	-242.41	1.33	-2.93	-1.78	0.328	-0.273	-54.457
1,020.00	3.22	75.55	1,019.91	-272.40	1.41	-2.57	-1.44	3.232	3.118	-94.281
1,050.00	8.14	76.47	1,049.73	-302.22	2.28	0.48	1.62	4.922	4.921	0.917
1,080.00	11.09	85.74	1,079.32	-331.81	2.74	5.37	6.00	3.316	2.942	9.273
1,110.00	15.41	83.94	1,108.51	-361.00	3.64	12.19	12.27	4.340	4.321	-1.800
1,140.00	23.64	81.74	1,136.77	-389.26	4.55	22.15	21.21	8.266	8.234	-2.200
1,170.00	28.37	74.90	1,163.65	-416.14	7.53	35.10	33.78	5.591	4.727	-6.836
1,200.00	33.16	82.20	1,189.42	-441.91	10.76	50.09	48.20	6.070	4.796	7.298
1,230.00	37.33	92.49	1,213.95	-466.44	11.11	67.32	63.01	7.243	4.169	10.288
1,260.00	41.34	92.02	1,237.20	-489.69	10.42	86.25	78.71	4.016	4.004	-0.476
1,290.00	45.66	87.10	1,258.97	-511.46	10.72	106.88	96.38	5.489	4.325	-4.915
1,320.00	48.29	87.06	1,279.18	-531.67	11.82	129.02	115.75	2.630	2.630	-0.041
1,350.00	53.15	86.65	1,298.52	-551.01	13.05	151.91	135.83	4.871	4.860	-0.408
1,380.00	61.05	88.09	1,314.42	-566.91	14.32	177.28	158.04	7.993	7.901	1.441
1,410.00	66.65	87.62	1,327.69	-580.18	15.26	204.16	181.34	5.608	5.591	-0.475
1,440.00	70.11	87.54	1,338.63	-591.12	16.28	232.07	205.57	3.470	3.469	-0.074
1,470.00	71.80	87.79	1,348.84	-601.33	17.43	260.25	230.10	1.703	1.687	0.246
1,500.00	77.99	87.69	1,356.47	-608.96	18.67	289.22	255.34	6.186	6.186	-0.095
1,530.00	83.15	88.77	1,361.50	-613.99	19.59	318.77	280.91	5.270	5.162	1.075
1,560.00	86.41	88.02	1,363.78	-616.27	20.27	348.67	306.64	3.346	3.263	-0.745

<b>Database:</b>	Compass 5000 Canada	<b>Local Co-ordinate Reference:</b>	Well BLACKSPUR HZ LEDUC-WB 16-11-51-2
<b>Company:</b>	BLACKSPUR OIL CORP._N83	<b>TVD Reference:</b>	Actual KB @ 747.51m (Horizon 43)
<b>Project:</b>	Leduc-WB (NAD 83-Z11)	<b>MD Reference:</b>	Actual KB @ 747.51m (Horizon 43)
<b>Site:</b>	14-03-051-02W5	<b>North Reference:</b>	True
<b>Well:</b>	BLACKSPUR HZ LEDUC-WB 16-11-51-2	<b>Survey Calculation Method:</b>	Minimum Curvature
<b>Wellbore:</b>	100/16-11-051-02W5/00		
<b>Job Number</b>	28333 P5		

**Planned Survey**

Measured Depth (m)	Inclination (°)	Azimuth (°)	Vertical Depth (m)	Subsea Depth (m)	+N/-S (m)	+E/-W (m)	Vertical Section (m)	Dogleg Rate (°/30m)	Build Rate (°/30m)	Turn Rate (°/30m)
1,590.00	85.70	87.50	1,365.89	-618.38	21.51	378.57	332.67	0.883	-0.711	-0.526
<b>Tie on to Last Survey = 1599m</b>										
1,599.00	85.40	87.20	1,366.59	-619.08	21.93	387.53	340.50	1.412	-1.006	-0.994
<b>Extrap to ICP = 1615m</b>										
1,615.00	85.40	87.20	1,367.87	-620.36	22.70	403.46	354.43	0.000	0.000	0.000
1,620.00	85.40	87.20	1,368.27	-620.76	22.95	408.44	358.78	0.000	0.000	0.000
<b>Start Build</b>										
1,625.00	85.40	87.20	1,368.67	-621.16	23.19	413.42	363.14	0.000	0.000	0.000
<b>@ 90° Inc - Build 6°/30m</b>										
1,648.00	90.00	87.20	1,369.60	-622.09	24.31	436.37	383.21	6.000	6.000	0.000
1,650.00	90.40	87.20	1,369.59	-622.08	24.41	438.36	384.95	6.000	6.000	-0.012
1,652.75	90.95	87.20	1,369.56	-622.05	24.55	441.11	387.36	6.000	6.000	-0.012
1,680.00	90.95	87.20	1,369.11	-621.60	25.88	468.32	411.16	0.000	0.000	0.000
1,710.00	90.95	87.20	1,368.61	-621.10	27.34	498.28	437.36	0.000	0.000	0.000
1,740.00	90.95	87.20	1,368.11	-620.60	28.81	528.24	463.56	0.000	0.000	0.000
1,770.00	90.95	87.20	1,367.61	-620.10	30.28	558.20	489.77	0.000	0.000	0.000
1,800.00	90.95	87.20	1,367.11	-619.60	31.74	588.16	515.97	0.000	0.000	0.000
1,821.51	90.95	87.20	1,366.76	-619.25	32.79	609.65	534.76	0.000	0.000	0.000
1,830.00	90.90	85.50	1,366.62	-619.11	33.33	618.12	542.23	6.000	-0.178	-5.998
1,860.00	90.72	79.50	1,366.20	-618.69	37.25	647.84	569.53	6.000	-0.184	-5.998
1,890.00	90.52	73.51	1,365.87	-618.36	44.24	677.00	597.98	6.000	-0.192	-5.997
1,920.00	90.33	67.51	1,365.65	-618.14	54.25	705.27	627.26	6.000	-0.198	-5.997
1,950.00	90.13	61.51	1,365.53	-618.02	67.15	732.33	657.06	6.000	-0.201	-5.997
<b>WP = 1968.57m</b>										
1,968.57	90.00	57.80	1,365.51	-618.00	76.53	748.36	675.62	6.000	-0.203	-5.997
1,980.00	90.00	56.28	1,365.51	-618.00	82.75	757.95	687.04	4.000	0.000	-4.000
2,010.00	90.00	52.28	1,365.51	-618.00	100.27	782.30	716.97	4.000	0.000	-4.000
2,018.73	90.00	51.11	1,365.51	-618.00	105.68	789.15	725.65	4.000	0.000	-4.000
2,040.00	90.00	51.11	1,365.51	-618.00	119.03	805.70	746.76	0.000	0.000	0.000
2,070.00	90.00	51.11	1,365.51	-618.00	137.86	829.06	776.54	0.000	0.000	0.000
2,100.00	90.00	51.11	1,365.51	-618.00	156.70	852.41	806.32	0.000	0.000	0.000
2,130.00	90.00	51.11	1,365.51	-618.00	175.53	875.76	836.10	0.000	0.000	0.000
2,160.00	90.00	51.11	1,365.51	-618.00	194.37	899.11	865.88	0.000	0.000	0.000
2,190.00	90.00	51.11	1,365.51	-618.00	213.20	922.46	895.66	0.000	0.000	0.000
<b>LSD 4-11 Intercept = 2207.39m</b>										
2,207.39	90.00	51.11	1,365.51	-618.00	224.12	936.00	912.92	0.000	0.000	0.000
2,220.00	90.21	49.44	1,365.49	-617.98	232.18	945.70	925.41	3.999	0.498	-3.968
2,221.27	90.23	49.28	1,365.48	-617.97	233.00	946.66	926.67	4.000	0.498	-3.969
2,250.00	90.23	49.28	1,365.37	-617.86	251.75	968.43	955.06	0.000	0.000	0.000
2,280.00	90.23	49.28	1,365.25	-617.74	271.32	991.17	984.70	0.000	0.000	0.000
2,310.00	90.23	49.28	1,365.13	-617.62	290.89	1,013.90	1,014.35	0.000	0.000	0.000
2,340.00	90.23	49.28	1,365.00	-617.49	310.46	1,036.64	1,044.00	0.000	0.000	0.000
2,370.00	90.23	49.28	1,364.88	-617.37	330.03	1,059.38	1,073.65	0.000	0.000	0.000
2,400.00	90.23	49.28	1,364.76	-617.25	349.61	1,082.11	1,103.29	0.000	0.000	0.000
2,430.00	90.23	49.28	1,364.64	-617.13	369.18	1,104.85	1,132.94	0.000	0.000	0.000
2,460.00	90.23	49.28	1,364.52	-617.01	388.75	1,127.58	1,162.59	0.000	0.000	0.000
2,490.00	90.23	49.28	1,364.40	-616.89	408.32	1,150.32	1,192.23	0.000	0.000	0.000
2,520.00	90.23	49.28	1,364.28	-616.77	427.89	1,173.06	1,221.88	0.000	0.000	0.000
2,550.00	90.23	49.28	1,364.16	-616.65	447.47	1,195.79	1,251.53	0.000	0.000	0.000
2,580.00	90.23	49.28	1,364.04	-616.53	467.04	1,218.53	1,281.17	0.000	0.000	0.000
2,610.00	90.23	49.28	1,363.92	-616.41	486.61	1,241.26	1,310.82	0.000	0.000	0.000
2,640.00	90.23	49.28	1,363.80	-616.29	506.18	1,264.00	1,340.47	0.000	0.000	0.000

<b>Database:</b>	Compass 5000 Canada	<b>Local Co-ordinate Reference:</b>	Well BLACKSPUR HZ LEDUC-WB 16-11-51-2
<b>Company:</b>	BLACKSPUR OIL CORP._N83	<b>TVD Reference:</b>	Actual KB @ 747.51m (Horizon 43)
<b>Project:</b>	Leduc-WB (NAD 83-Z11)	<b>MD Reference:</b>	Actual KB @ 747.51m (Horizon 43)
<b>Site:</b>	14-03-051-02W5	<b>North Reference:</b>	True
<b>Well:</b>	BLACKSPUR HZ LEDUC-WB 16-11-51-2	<b>Survey Calculation Method:</b>	Minimum Curvature
<b>Wellbore:</b>	100/16-11-051-02W5/00		
<b>Job Number</b>	28333 P5		

Planned Survey										
Measured Depth (m)	Inclination (°)	Azimuth (°)	Vertical Depth (m)	Subsea Depth (m)	+N/-S (m)	+E/-W (m)	Vertical Section (m)	Dogleg Rate (°/30m)	Build Rate (°/30m)	Turn Rate (°/30m)
2,670.00	90.23	49.28	1,363.68	-616.17	525.76	1,286.73	1,370.12	0.000	0.000	0.000
2,700.00	90.23	49.28	1,363.56	-616.05	545.33	1,309.47	1,399.76	0.000	0.000	0.000
2,730.00	90.23	49.28	1,363.43	-615.92	564.90	1,332.21	1,429.41	0.000	0.000	0.000
2,760.00	90.23	49.28	1,363.31	-615.80	584.47	1,354.94	1,459.06	0.000	0.000	0.000
2,790.00	90.23	49.28	1,363.19	-615.68	604.04	1,377.68	1,488.70	0.000	0.000	0.000
2,820.00	90.23	49.28	1,363.07	-615.56	623.62	1,400.41	1,518.35	0.000	0.000	0.000
2,850.00	90.23	49.28	1,362.95	-615.44	643.19	1,423.15	1,548.00	0.000	0.000	0.000
2,880.00	90.23	49.28	1,362.83	-615.32	662.76	1,445.88	1,577.64	0.000	0.000	0.000
2,910.00	90.23	49.28	1,362.71	-615.20	682.33	1,468.62	1,607.29	0.000	0.000	0.000
2,940.00	90.23	49.28	1,362.59	-615.08	701.90	1,491.36	1,636.94	0.000	0.000	0.000
2,970.00	90.23	49.28	1,362.47	-614.96	721.48	1,514.09	1,666.59	0.000	0.000	0.000
3,000.00	90.23	49.28	1,362.35	-614.84	741.05	1,536.83	1,696.23	0.000	0.000	0.000
3,030.00	90.23	49.28	1,362.23	-614.72	760.62	1,559.56	1,725.88	0.000	0.000	0.000
3,060.00	90.23	49.28	1,362.11	-614.60	780.19	1,582.30	1,755.53	0.000	0.000	0.000
3,090.00	90.23	49.28	1,361.99	-614.48	799.77	1,605.04	1,785.17	0.000	0.000	0.000
3,120.00	90.23	49.28	1,361.87	-614.36	819.34	1,627.77	1,814.82	0.000	0.000	0.000
3,150.00	90.23	49.28	1,361.74	-614.23	838.91	1,650.51	1,844.47	0.000	0.000	0.000
3,180.00	90.23	49.28	1,361.62	-614.11	858.48	1,673.24	1,874.11	0.000	0.000	0.000
3,210.00	90.23	49.28	1,361.50	-613.99	878.05	1,695.98	1,903.76	0.000	0.000	0.000
3,240.00	90.23	49.28	1,361.38	-613.87	897.63	1,718.71	1,933.41	0.000	0.000	0.000
3,270.00	90.23	49.28	1,361.26	-613.75	917.20	1,741.45	1,963.05	0.000	0.000	0.000
3,300.00	90.23	49.28	1,361.14	-613.63	936.77	1,764.19	1,992.70	0.000	0.000	0.000
3,330.00	90.23	49.28	1,361.02	-613.51	956.34	1,786.92	2,022.35	0.000	0.000	0.000
3,360.00	90.23	49.28	1,360.90	-613.39	975.91	1,809.66	2,052.00	0.000	0.000	0.000
3,390.00	90.23	49.28	1,360.78	-613.27	995.49	1,832.39	2,081.64	0.000	0.000	0.000
3,420.00	90.23	49.28	1,360.66	-613.15	1,015.06	1,855.13	2,111.29	0.000	0.000	0.000
3,450.00	90.23	49.28	1,360.54	-613.03	1,034.63	1,877.87	2,140.94	0.000	0.000	0.000
3,480.00	90.23	49.28	1,360.42	-612.91	1,054.20	1,900.60	2,170.58	0.000	0.000	0.000
3,510.00	90.23	49.28	1,360.30	-612.79	1,073.78	1,923.34	2,200.23	0.000	0.000	0.000
3,540.00	90.23	49.28	1,360.18	-612.66	1,093.35	1,946.07	2,229.88	0.000	0.000	0.000
3,570.00	90.23	49.28	1,360.05	-612.54	1,112.92	1,968.81	2,259.52	0.000	0.000	0.000
3,600.00	90.23	49.28	1,359.93	-612.42	1,132.49	1,991.54	2,289.17	0.000	0.000	0.000
3,630.00	90.23	49.28	1,359.81	-612.30	1,152.06	2,014.28	2,318.82	0.000	0.000	0.000
3,660.00	90.23	49.28	1,359.69	-612.18	1,171.64	2,037.02	2,348.47	0.000	0.000	0.000
3,690.00	90.23	49.28	1,359.57	-612.06	1,191.21	2,059.75	2,378.11	0.000	0.000	0.000
3,720.00	90.23	49.28	1,359.45	-611.94	1,210.78	2,082.49	2,407.76	0.000	0.000	0.000
3,750.00	90.23	49.28	1,359.33	-611.82	1,230.35	2,105.22	2,437.41	0.000	0.000	0.000
3,780.00	90.23	49.28	1,359.21	-611.70	1,249.92	2,127.96	2,467.05	0.000	0.000	0.000
3,810.00	90.23	49.28	1,359.09	-611.58	1,269.50	2,150.70	2,496.70	0.000	0.000	0.000
3,840.00	90.23	49.28	1,358.97	-611.46	1,289.07	2,173.43	2,526.35	0.000	0.000	0.000
3,870.00	90.23	49.28	1,358.85	-611.34	1,308.64	2,196.17	2,555.99	0.000	0.000	0.000
3,900.00	90.23	49.28	1,358.73	-611.22	1,328.21	2,218.90	2,585.64	0.000	0.000	0.000
3,930.00	90.23	49.28	1,358.61	-611.10	1,347.78	2,241.64	2,615.29	0.000	0.000	0.000
3,960.00	90.23	49.28	1,358.48	-610.97	1,367.36	2,264.37	2,644.94	0.000	0.000	0.000
3,990.00	90.23	49.28	1,358.36	-610.85	1,386.93	2,287.11	2,674.58	0.000	0.000	0.000
4,020.00	90.23	49.28	1,358.24	-610.73	1,406.50	2,309.85	2,704.23	0.000	0.000	0.000
4,050.00	90.23	49.28	1,358.12	-610.61	1,426.07	2,332.58	2,733.88	0.000	0.000	0.000
4,080.00	90.23	49.28	1,358.00	-610.49	1,445.65	2,355.32	2,763.52	0.000	0.000	0.000
4,110.00	90.23	49.28	1,357.88	-610.37	1,465.22	2,378.05	2,793.17	0.000	0.000	0.000
4,140.00	90.23	49.28	1,357.76	-610.25	1,484.79	2,400.79	2,822.82	0.000	0.000	0.000
4,170.00	90.23	49.28	1,357.64	-610.13	1,504.36	2,423.52	2,852.46	0.000	0.000	0.000
4,200.00	90.23	49.28	1,357.52	-610.01	1,523.93	2,446.26	2,882.11	0.000	0.000	0.000

<b>Database:</b>	Compass 5000 Canada	<b>Local Co-ordinate Reference:</b>	Well BLACKSPUR HZ LEDUC-WB 16-11-51-2
<b>Company:</b>	BLACKSPUR OIL CORP._N83	<b>TVD Reference:</b>	Actual KB @ 747.51m (Horizon 43)
<b>Project:</b>	Leduc-WB (NAD 83-Z11)	<b>MD Reference:</b>	Actual KB @ 747.51m (Horizon 43)
<b>Site:</b>	14-03-051-02W5	<b>North Reference:</b>	True
<b>Well:</b>	BLACKSPUR HZ LEDUC-WB 16-11-51-2	<b>Survey Calculation Method:</b>	Minimum Curvature
<b>Wellbore:</b>	100/16-11-051-02W5/00		
<b>Job Number</b>	28333 P5		

Planned Survey										
Measured Depth (m)	Inclination (°)	Azimuth (°)	Vertical Depth (m)	Subsea Depth (m)	+N/-S (m)	+E/-W (m)	Vertical Section (m)	Dogleg Rate (°/30m)	Build Rate (°/30m)	Turn Rate (°/30m)
TD = 4202.21m										
4,202.21	90.23	49.28	1,357.51	-610.00	1,525.37	2,447.93	2,884.29	0.000	0.000	0.000

Design Targets										
Target Name - hit/miss target - Shape	Dip Angle (°)	Dip Dir. (°)	TVD (m)	+N/-S (m)	+E/-W (m)	Northing (m)	Easting (m)	Latitude	Longitude	
TOE - 100/16-11 (P5) - plan hits target center - Point	0.00	0.00	1,357.51	1,525.37	2,447.93	5,919,879.00	687,779.00	53° 23' 40.384 N	114° 10' 32.872 W	
4-11 IP - plan hits target center - Point	0.00	0.00	1,365.51	224.12	936.00	5,918,519.70	686,319.03	53° 22' 58.312 N	114° 11' 54.704 W	
WYPNT - 100/16-11 - plan hits target center - Point	0.00	0.00	1,365.51	76.54	748.36	5,918,364.90	686,137.30	53° 22' 53.539 N	114° 12' 4.856 W	
HEEL - 100/16-11 - plan misses target center by 0.76m at 1574.82m MD (1364.76 TVD, 20.81 N, 363.45 E) - Point	0.00	0.00	1,365.51	20.93	363.39	5,918,294.30	685,754.80	53° 22' 51.742 N	114° 12' 25.683 W	

Formations						
Measured Depth (m)	Vertical Depth (m)	Name	Lithology	Dip (°)	Dip Direction (°)	
132.53	132.51	HORSESHOE CANYON		0.00		
430.57	430.51	BELLY RIVER		0.00		
703.59	703.51	BASAL BELLY RIVER		0.00		
726.59	726.51	LEA PARK		0.00		
874.59	874.51	COLORADO		0.00		
982.59	982.51	CARDIUM		0.00		
1,093.49	1,092.51	2WS		0.00		
1,221.96	1,207.51	BFS		0.00		
1,269.87	1,244.51	VIKING		0.00		
1,317.49	1,277.51	JOLI FOU		0.00		
1,335.67	1,289.51	MANNVILLE		0.00		
1,380.19	1,314.51	UPPER COAL		0.00		
1,436.70	1,337.51	TOP SPARKY B		0.00		
1,475.59	1,350.51	TOP SPARKY A		0.00		



<b>Database:</b>	Compass 5000 Canada	<b>Local Co-ordinate Reference:</b>	Well BLACKSPUR HZ LEDUC-WB 16-11-51-2
<b>Company:</b>	BLACKSPUR OIL CORP._N83	<b>TVD Reference:</b>	Actual KB @ 747.51m (Horizon 43)
<b>Project:</b>	Leduc-WB (NAD 83-Z11)	<b>MD Reference:</b>	Actual KB @ 747.51m (Horizon 43)
<b>Site:</b>	14-03-051-02W5	<b>North Reference:</b>	True
<b>Well:</b>	BLACKSPUR HZ LEDUC-WB 16-11-51-2	<b>Survey Calculation Method:</b>	Minimum Curvature
<b>Wellbore:</b>	100/16-11-051-02W5/00		
<b>Job Number</b>	28333 P5		

Plan Annotations					
Measured Depth (m)	Vertical Depth (m)	Local Coordinates			
		+N/-S (m)	+E/-W (m)	Comment	
1,599.00	1,366.59	21.93	387.53	Tie on to Last Survey = 1599m	
1,615.00	1,367.87	22.70	403.46	Extrap to ICP = 1615m	
1,625.00	1,368.67	23.19	413.42	Start Build	
1,648.00	1,369.60	24.31	436.37	@ 90° Inc	
1,648.00	1,369.60	24.31	436.37	Build 6°/30m	
1,968.57	1,365.51	76.53	748.36	WP = 1968.57m	
2,207.39	1,365.51	224.12	936.00	LSD 4-11 Intercept = 2207.39m	
4,202.21	1,357.51	1,525.37	2,447.93	TD = 4202.21m	